

Warrington East Phases 2 and 3

Project news

Issue 18 : 7 August 2019

Birchwood Way and College Place

Evening road closures starting 12 August, 7pm – 1am.

Carriageway surfacing work will be taking place on Birchwood Way at College Place junction and approaches from Monday 12 August. Phased road closures and traffic diversions will be in place to allow the work to be carried out safely.

The work will take place during weekday evenings, with roads closed from 7pm until 1am. Laying of the new surfacing will stop by about 11pm, but the roads will remain closed until 1am to allow the material to cool down.

The work is to be done in two sections, on the north and south sides of the roundabout and approach roads. The northern and southern sections of the roundabout will be closed in turn, with traffic diversions in place. There will be a third phase to surface Birchwood Way west of College Place. Please see the maps below. The programmed dates for each closure are shown but these may change if the work is affected by adverse weather etc.

Crab Lane will be closed for resurfacing at the same time as the north side of College Place. This includes the junction with Fearnhead Lane.

Woolston Grange Avenue will be closed from Harpers Road when the resurfacing is taking place on the south side of College Place.

Bus service diversions will be advertised on affected bus stops and on the Warrington's Own Buses website.

Resurfacing of Birchwood Way west of Oakwood Gate will start after the College Place surfacing work is complete, starting on 28 August. Details will follow in a further newsletter.

We apologise for any inconvenience caused by these roadworks and diversions.

Further information about both projects, including plans of the work, is on our website- www.warrington.gov.uk/WE2. You can email the project team at we2@warrington.gov.uk.

Warrington East Phases 2 and 3 Project Team.



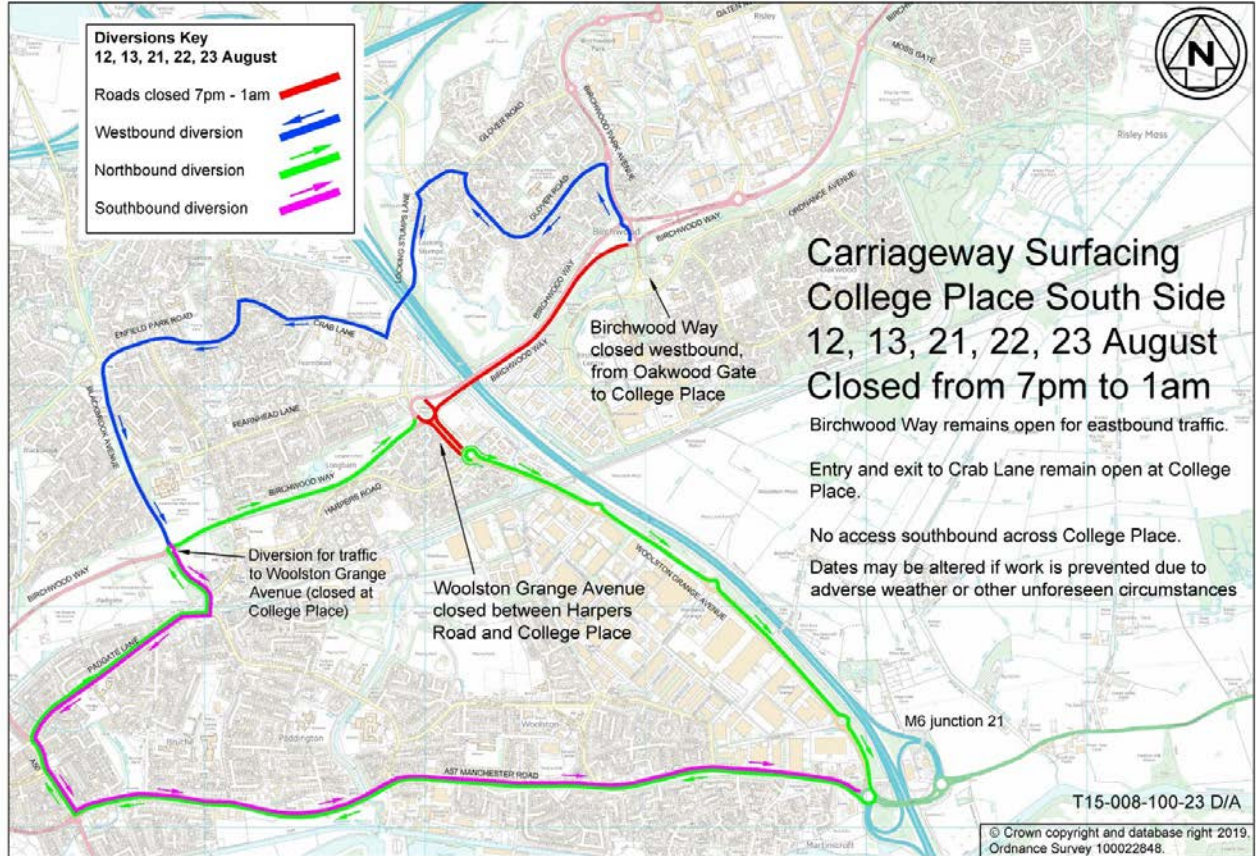
WARRINGTON
Borough Council

Warrington East Phases 2 and 3

Project news

Issue 18 : 7 August 2019

Diversion routes for College Place South side closure



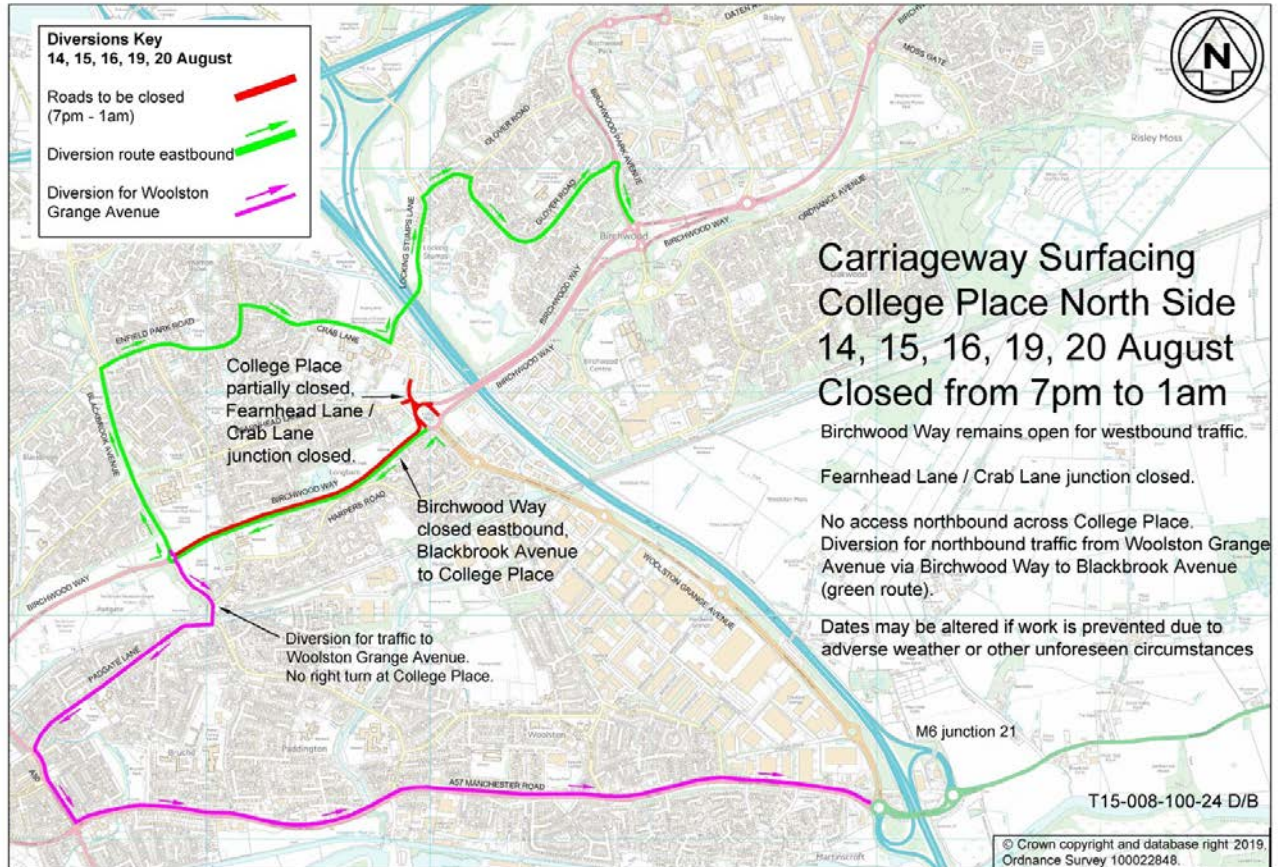
Woolston Grange Avenue will be closed from Harpers Road when the resurfacing is taking place on the south side of College Place.

Warrington East Phases 2 and 3

Project news

Issue 18 : 7 August 2019

Diversion routes for College Place North side closure



Crab Lane will be closed for resurfacing at the same time as the north side of College Place. This includes the junction with Fearnhead Lane.

Warrington East Phases 2 and 3

Project news

Issue 18 : 7 August 2019

Tuesday 27 August for 3 evenings **Blackbrook Avenue to College Place**

Birchwood Way will be closed to traffic in both directions between Blackbrook Avenue and College Place from Tuesday 27 August for 3 evenings from 7pm to 1am. This closure is to allow the carriageway surfacing work to be completed on the western approach to College Place. Traffic will be diverted along Blackbrook Avenue, Enfield Park Road, Crab Lane and vice-versa.

Diversion route map for Birchwood Way west closure

